





fully prefabricated



tough ALU door



massive interior



double glazing



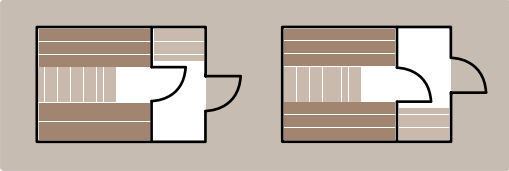
practical anteroom

Standard configuration:

DIMENSIONS	330x230x235 cm
WEIGHT	1800 kg
GLAZING	3 sides glass, double glazing, parsol dark grey glass
DOOR	Aluminium frame, double glazed, parsol dark grey glass
FLOORING	Tiles
INTERIOR WOOD	Rustic tyrol wood cladding, heat treated and brushed
BENCHES	Thermo aspen
BACKREST	Thermo aspen
CONTROL UNIT	Digital touch control panel Harvia
COLOR LIGHT THERAPY	LED RGB under the bench and behind the backrest incl. remote control
HEATER	Harvia Virta 9 kW
INFRARED HEATERS	Up to 3 pcs - full spectrum heater, as an option

Available options:

GLAZING	Mirror, mirror bronze, mirror+, parsol (dark) grey, parsol bronze, transparent
HEATERS	Fin and Bio heaters from Harvia, EOS, or any other manufacturer by request
ILLUMINATION	Digital addressable LED interior illumination, Outdoor ambient illumination below sauna; vertical LED stripes integrated in facade
CONTROL	WIFI control
FACADES	Wooden, glass, IPE, Fmax, larch



Conditions to be provided by the costumer:

POWER CABLE: 400 V / 5 x 2.5 mm² wire gauge, 3 x 16 Amp C-type fuse 2 meter length , equipped with 400 volt 16A-6p-6h IP44 female connector. Your sauna will be supplied with the corresponding compatible connector, facilitating a hassle-free and secure electrical connection.

FOUNDATION: flat and solid; a reinforced concrete slab, matching the dimensions of the sauna, with a thickness of 15 cm, the sauna is set on adjustable feet for leveling and alignment.

INSTALLATION: Accessibility to the installation site for crane delivery must be checked and ensured. IMPORTANT: It is the customer's responsibility to arrange for the crane or other delivery means and to clarify all requirements for installation in advance.

DELIVERY & ASSEMBLY: The sauna is prefabricated in the factory and is delivered directly to the construction site by prior arrangement. Generally, the customer is responsible for organizing all installation measures unless otherwise agreed. Final assembly, including electrical connection for testing, commissioning, functional testing, training, and handover will be carried out by the seller's or manufacturer's assembly team.

