



Installation, Operation and Maintenance Manual

Steambath Generator Systems

Residential Models: MX4E, MX5E, MX6E

IMPORTANT: Leave this material with the home owner.

mr.steam® | Feel Good Inc.®

RESIDENTIAL STEAMBATH GENERATOR SYSTEMS

Installation, Operation and Maintenance Manual

MODELS: MX4E, MX5E, MX6E

MODEL _____

SERIAL NO. _____

INSTALLER'S SECTION:

Important Safety Information1-2

PRE-INSTALLATION INFORMATION

Steam Room Guidelines3

Water Quality3

STEAM GENERATOR

Locating the Steam Generator4

Correct Sizing5

Clearance Specifications6

Generator Dimensions7

Parts Identification Diagram8

Replacement Parts8

PLUMBING

General, Water Supply, Drain, AromaSteam,
Safety Valve, Condensation Pan9

Steam Supply Plumbing10

ELECTRICAL

Instructions and Electrical Chart11

Wiring Diagrams12

Connecting Multiple Generators13

POST-INSTALLATION INFORMATION

Generator and Start-Up Checkout14

Troubleshooting14

Control Status Codes15

Liquid Level Control Board15

ACCESSORIES

Control16

AutoFlush17

Steam Heads18

Condensation Pan19

Express Steam19

HOMEOWNER'S SECTION:

Important Safety Instructions20-21

Setting the Temperature, Safety, and Operating Info ...21

Care Tips22

Essential Oils22

Warranty22



mr.steam

Sussman-Automatic Corporation® • hello@mrsteam.com • www.mrsteam.com

43-20 34th Street, Long Island City, NY 11101 1 800 76 STEAM • 9410 S. La Cienega Blvd. Inglewood CA 90301 1 800 72 STEAM

PUR100420 Rev 4.19

INSTALLER SECTION

IMPORTANT SAFETY INFORMATION

As you follow these instructions, you will notice warning and caution symbols. This blocked information is important for the safe and efficient installation and operation of this generator. These are types of potential hazards that may occur during installation and operation:

⚠ WARNING Indicates a potentially hazardous situation, which, if not avoided, could result in death or serious injury.

⚠ CAUTION Indicates a potentially hazardous situation, which, if not avoided may result in minor or moderate injury or product damage.

NOTICE This highlights information that is especially relevant to a problem-free installation.

All information in these instructions is based on the latest product information available at the time of publication. Sussman-Automatic Corporation reserves the right to make changes at any time without notice.

⚠ WARNING Applies to 1-12

1. Never use damaged equipment, doing so may result in an inoperative or hazardous installation.
2. Discontinue use of the steam generator and control if the steam generator or control are damaged or otherwise not functioning properly. Using damaged equipment may result in an inoperative or hazardous installation.
3. The MAX series of steam generators are for residential use only. Commercial or other nonresidential applications void the warranty and may adversely affect product performance and may represent a safety hazard.
4. Read these instructions before installation operation or service.
5. Although the MAX steambath generators have been fully qualified for shipment by MrSteam®, the following must be reviewed for proper, safe and enjoyable steam bathing:
 - Verify that the model and accessories specifications are correct for the incoming line voltage.
 - Insure steambath generator has been correctly sized for the steam room. Pay particular attention to room volume and construction. If any questions, please refer to MrSteam sizing and selection guide on page 5 or call MrSteam.
6. Supervise children at all times.
7. Steam is hot and can cause injury or death if improperly used. Steam rooms contain steam and elevated temperatures. Please read and observe all warnings in this manual before installing or using a steam room.
8. Prolonged use of the steam system can raise excessively the internal human body temperature and impair the body's ability to regulate its internal temperature (hyperthermia). Limit your use of steam to 10-15 minutes until you are certain of your body's reaction.
9. Excessive temperatures have a high potential for causing fetal damage during the early months of pregnancy. Pregnancy or possibly pregnant women should consult a physician regarding correct exposure.

10. Obese persons and persons with a history of heart disease, low or high blood pressure, circulatory system problems, or diabetes should consult a physician before using a steambath.
11. Persons using medication should consult a physician before using a steambath since some medication may induce drowsiness while other medications may affect heart rate, blood pressure and circulation.
12. Electric shock hazard. MrSteam steam generators are connected to 240V line voltage and contain live electrical components. All installation and service to be performed by qualified and licensed electricians and plumbers only. Installation or service by unqualified persons or failure to use MrSteam parts may result in property damage or in a personal injury.

⚠ CAUTION Applies to 13-17

13. The wet surfaces of steam enclosures may be slippery. Use care when entering or leaving. To prevent slip and fall hazards non-slip strips must be installed on the steam room floor.
14. The steam head is hot. Do not touch the steam head and avoid the steam near the steam head.
15. In considering the purchase or use of this steambath system, please note that if you are pregnant, have a coronary condition, are in poor health, are being treated for any other medical condition, or are using medication or drugs, MrSteam recommends that you obtain the approval of a physician before use. For information about this product and safety issues, call 1.800.76.STEAM.
16. The information in this manual should be used in conjunction with consultations with an architect, designer and contractor in determining factors necessary in providing a suitable and safe steam room.
17. MrSteam steam generators are intended to be operated with MrSteam controls and accessories only, and are to be installed strictly in accordance with the specific instructions contained in this manual and as supplied in the manuals provided with the controls or accessories.

IMPORTANT SAFETY INFORMATION (cont.)**NOTICE** Applies to 1-6

1. This document contains important safety, operation and maintenance information. Leave this document with the homeowner. Do not discard this document.
2. Consider any controls and accessories before initiating installation. Read the Installation and Operation Manual of all controls and accessories available at www.mrsteam.com
3. Record the model and serial number of the steam generator in the space provided in the table of contents of this manual.
4. If acrylic, fiberglass or other non-heat resistant materials are used as part of the steam room enclosure, consult with the material manufacture and see page. 18, "Installing the Steamhead" for additional details.
5. Carefully inspect the steam generator and packaging for shipping damage. In the event of shipping damage, please contact the carrier for claim information. MrSteam customer service department can assist you with any missing or damaged parts.
6. The physical size of the steam generator, clearance for plumbing servicing, and its distance from the steam room must all be considered before installation.

⚠ WARNING

HYPERTHERMIA occurs when the internal temperature of the body reaches a level several degrees above the normal body temperature of 98.6° F. The symptoms of hyperthermia include an increase in the internal temperature of the body, dizziness, lethargy, drowsiness, and fainting. The effects of hyperthermia include:

- a) Failure to perceive heat
- b) Failure to recognize the need to exit the steambath
- c) Unawareness of impending risk
- d) Fetal damage in pregnant women
- e) Physical inability to exit the steambath
- f) Unconsciousness.

The use of alcohol, drugs, or medication can greatly increase the risk of hyperthermia.

⚠ WARNING

This peel and stick warning label is an essential part of providing a safe environment for steam room users. This peel and stick warning label must be applied to the wall of the shower or steam enclosure, at a point that is visible to all users. Failure to install this sticker may result in serious injury or death.

The location where this owner's manual is kept shall be written in the space provided on the label using permanent ink.

For a replacement warning label contact MrSteam customer service at 1-800-76-STEAM or hello@mrsteam.com.

! WARNING**REDUCE THE RISK OF OVERHEATING AND SCALDING**

1. EXIT IMMEDIATELY IF UNCOMFORTABLE, DIZZY OR SLEEPY. STAYING TOO LONG IN A HEATED AREA IS CAPABLE OF CAUSING OVERHEATING.
2. SUPERVISE CHILDREN AT ALL TIMES.
3. CHECK WITH A DOCTOR BEFORE USE IF PREGNANT, DIABETIC, IN POOR HEALTH OR UNDER MEDICAL CARE.
4. BREATHING HEATED AIR IN CONJUNCTION WITH CONSUMPTION OF ALCOHOL, DRUGS, OR MEDICATION IS CAPABLE OF CAUSING UNCONSCIOUSNESS.
5. DO NOT CONTACT STEAM HEAD OR STEAM AT THE STEAM HEAD.

REDUCE THE RISK OF SLIPPING AND FALL INJURY

1. USE CARE WHEN ENTERING OR EXITING THE STEAM ROOM. FLOOR MAY BE SLIPPERY

NOTE: FOR ADDITIONAL SAFETY CONSIDERATIONS SEE OWNER'S MANUAL WHICH IS KEPT: _____

THE OWNER'S MANUAL CAN BE FOUND AT WWW.MRSTEAM.COM

USE OF STEAM ROOM IN CONJUNCTION WITH CONSUMPTION OF ALCOHOL CAN BE DANGEROUS AND CAN RESULT IN INJURY THROUGH SLIP AND FALL OR OTHERWISE.

PRE-INSTALLATION CONSIDERATIONS

STEAM ROOM GUIDELINES

⚠ WARNING To prevent slip and fall hazards non-slip strips must be installed on the steam room floor.

NOTICE Applies to 1-9

1. Steam room must be completely enclosed, with full walls, door, floor and ceiling.
2. It is recommended that a gasketed door is used for steam containment.
3. Check the suitability of any materials with the manufacturer. Walls and ceilings must be constructed of heat-resistant and water-resistant, non-corrosive surface, such as tile, marble, molded acrylic, or other non-porous material.
4. The ceiling should be sloped and constructed to prevent dripping of condensate.
5. Provide a floor drain.
6. No heating, venting or air conditioning devices should be installed inside the steam room.
7. Steam room tile construction information is available from the Tile Council of America, Inc. by purchasing the TCA Handbook for Ceramic Tile Installation. Tel. (864) 646-8453 or www.tileusa.com.
8. Windows that are part of the steam room should be double paned and tempered safety glass.
9. If possible, limit steam room ceiling height to 8 feet. Exceeding 8 feet may require a higher-rated steam generator.

WATER QUALITY

NOTICE Applies to 1-9

1. The water supply should be tested prior to installation. If the mineral content exceeds the following recommended limits, various water treatment processes are recommended to correct the problem.
2. An analysis of the water must be made by a recognized and reliable water treatment company to ascertain the condition and treatment required.

Poor water quality can affect steam generator efficiency and/or result in steam generator damage. Water contains impurities in solution and suspension. These impurities concentrate in the generator. The concentration of these impurities increases as more water is introduced into the generator and steam is produced. A deposit or "scale" will form on the generator internal surfaces. This deposit can interfere with the proper generator operation and cause generator failure. The concentration of these impurities is generally controlled by the water quality and by periodic draining of the generator.

RECOMMENDED FEEDWATER QUALITY

Hardness, ppm 8 – 85 (~0.5 – 5 gpg)
 P-Alkalinity, ppm 85 – 410 (~5 – 24 gpg)
 T. Alkalinity, ppm 200 – 500 (~7 – 0 gpg)
 pH (strength of alkalinity) 8.0 – 11.4

In "hard" water areas, the manual drain valve should be opened as required to fully flush out accumulated materials, salts and other particles which are natural by-products of boiling water.

The optional AutoFlush System feature automatically drains the generator following each use. A time delay allows the water to cool down (about two hours) before it drains by gravity for a safe and gentle operation.

STEAM GENERATOR

LOCATING THE STEAM GENERATOR

⚠ WARNING Applies to 1-6

1. Do not route iSteam, AirTempo, iTempo/Plus, iTempo OR HomeWizard control wiring inside conduit together with power lines or close to hot water or steam piping. Doing so may result in an inoperative or hazardous installation.
2. Installation or operation of the steam generator in an ambient temperature above 113° F (45 °C) may result in a hazardous condition or property damage.
3. The MAX series of steam generators are for residential use only. Commercial or other nonresidential applications void the warranty and may adversely affect product performance and may represent a safety hazard.
4. Do not install steambath generator inside steam room, a shock hazard and/or equipment damage will occur.
5. Do not install steambath generator outdoors or wherever environmental conditions may result in a shock hazard and/or equipment damage.
6. To prevent damage to the steam generator or a fire hazard, do not install steambath generator near flammable or corrosive materials or chemicals such as gasoline, paint thinners, or the like. Installation in areas having high concentrations of chlorine (such as pool equipment room) must be avoided.

⚠ CAUTION Applies to 7-11

7. Do not install steambath generator or plumbing lines, in unheated attic or any locations where water could freeze and cause pipes to rupture and cause property damage.
8. Steam line, safety valve, drain valve and plumbing become hot during operation and remain hot after shutdown for a period of time. Provide appropriate protection, including insulating plumbing lines. Avoid plumbing runs and steam head locations that can come in contact with bathers to prevent a burn hazard.
9. Install steambath generator on a solid and level surface.
10. Install steambath generator in an upright position only to prevent damage to the generator, pipes and electrical system. Failure to install in an upright position may result in a leak or shock hazard.
11. Do not hang the MAX steam generator on a wall. Hanging the MAX generator on a wall may cause equipment damage and result in a leak, shock hazard or equipment damage.

NOTICE Applies to 12-18

12. Provide a minimum of (18) inches on the left side and 21" at the top of the steam generator or as required for servicing. See page 6 for complete information.
13. Select a location as near as practical to the steam room. Typical locations include: closet, cabinet, heated attic or basement.
14. The standard length of the cable for connecting the control to the steam generator is 30 feet. The steam generator and control must be located accordingly. A 60 foot cable is available as a special order part for iTempo® (PN 103990-60) and for iSteam® (PN 104117-60). The maximum cable length is 60 feet.
15. Install anti-water hammer device as necessary.
16. The control cable should be run in a dedicated 1-inch conduit to facilitate installation and service.
17. Provide unions as required to facilitate installation and removal of steam generator.
18. The minimum clearance from combustible surfaces is zero all around.

CHECKING STEAM GENERATOR FOR CORRECT SIZING

Materials of construction, room size and special design features such as large glass areas, all affect the steam generator model selection.	
1. Measure length, width & height in feet of the steam/shower or tub/shower	
Multiply the Length ____ x Width ____ x Height ____ =	ROOM VOLUME
2. Construction Materials:	
For natural stones: natural marble, stone, shale, glass block or concrete	Add 110%
For ceramic or porcelain tile on cement board or mortar bed	Add 40%
3. Ceiling Height: For each foot above 8 feet	Add 15%
4. Add all figures above to obtain the Total Room Volume required	

Compare your **Room Volume** to the **Chart** below and select the appropriate model.



RESIDENTIAL STEAM GENERATORS SPECIFICATION CHART							
Model No.	KW	Amps (for 240v/1PH)†	Wire Size‡	Total Adj. Room Vol.	Water Usage Gallons††	Dimensions*	Shipping Wt. (lbs)**
MX4E	20	84	2	875	2.8	25½" L x 20¾" H x 7¾" D	67
MX5E	24	100	1	1075	3.4	25½" L x 20¾" H x 7¾" D	67
MX6E	30	125	2/0	1275	4.2	25½" L x 20¾" H x 7¾" D	67

NOTICE Applies to 1-8

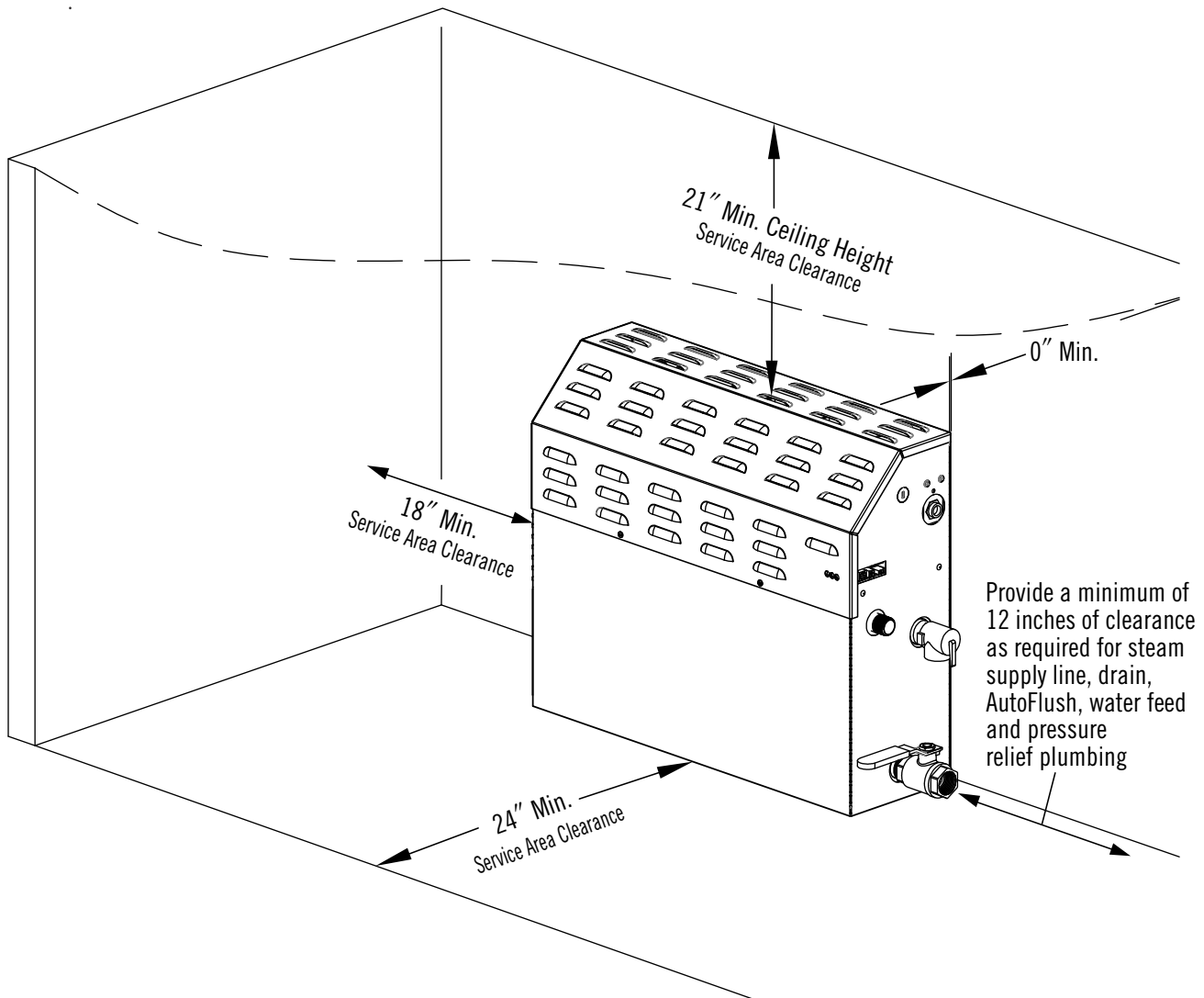
- † Amps are for 240/1PH rated units.
- ‡ Wire size (AWG) based on minimum 90°C rated THHN copper conductors. Refer to the National Electrical Code for other types of conductors.
- *Dimensions are for generator only, without AutoFlush or plumbing features. See page 7 for complete dimensional information.
- **Shipping weight is for generator only, without control or steamhead.
- †† Water usage based on 20 minutes of operation.6. For steam rooms constructed of acrylic or synthetic materials, subtract 15% from the room volume.
7. The MrSteam Sizing Chart allows for up to 60 feet of insulated steam line from the generator to the steam room. If the 60 foot line is exceeded consult with factory.
8. Occasionally a steam room has unforeseeable or hidden construction that requires special sizing or other consideration. MrSteam is not responsible if unconventional and/or unforeseeable materials or construction details result in a unit that does not operate to specification. If the sizing chart does not include the required options, please contact MrSteam to review sizing.

STEAM GENERATOR CLEARANCE SPECIFICATIONS**⚠ CAUTION** Applies to 1-2

1. Do not install MAX series inside a vanity or other small enclosed spaces. Do not install under the steam room bench. Installing the MAX steam generator in a small enclosed space may result in elevated temperatures and an inoperable steam generator.
2. Locate the MAX series generator in a room with ventilation as required to prevent an increase in ambient temperature. Failure to provide adequate ventilation may result in elevated temperature and an inoperable steam generator.

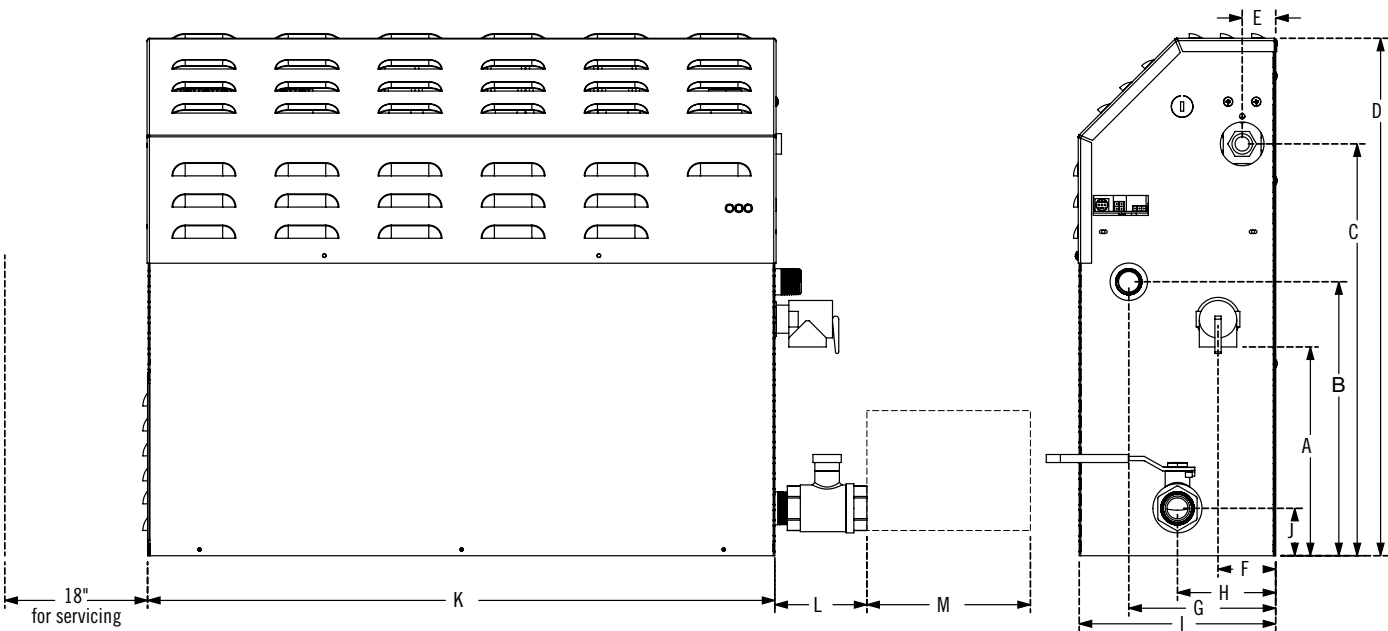
NOTICE Applies to 3-4

3. Minimum Clearance from Combustible Surfaces is zero all around.
4. For ease of servicing, MrSteam recommends a minimum clearance left, top and front MAX series, as shown.



All drawings are for illustrative purposes only

GENERATOR DIMENSIONS

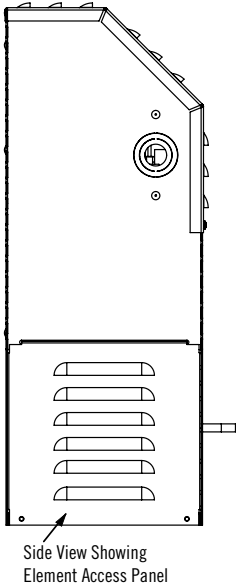


Dimensions

	MX4E-6E
A	9 3/4 (248)
B	11 (280)
C	16 1/2 (419)
D	20 3/4 (527)
E	1 3/8 (34)
F	2 3/8 (60)
G	5 7/8 (150)
H	5 7/8 (150)
I	7 7/8 (200)
J	1 7/8 (48)
K	25 1/8 (638)
L	2 3/8 (60)
M	6 3/8 (162)

- NOTES:
- 1. M=Optional AutoFlush
 - 2. All units in inches (MM)

⚠ WARNING TO AVOID EQUIPMENT DAMAGE DO NOT CONNECT POWER SUPPLY DIRECTLY TO ELEMENTS. Connecting power directly to the elements will result in a dry fire and result in elevated temperatures and a fire hazard.

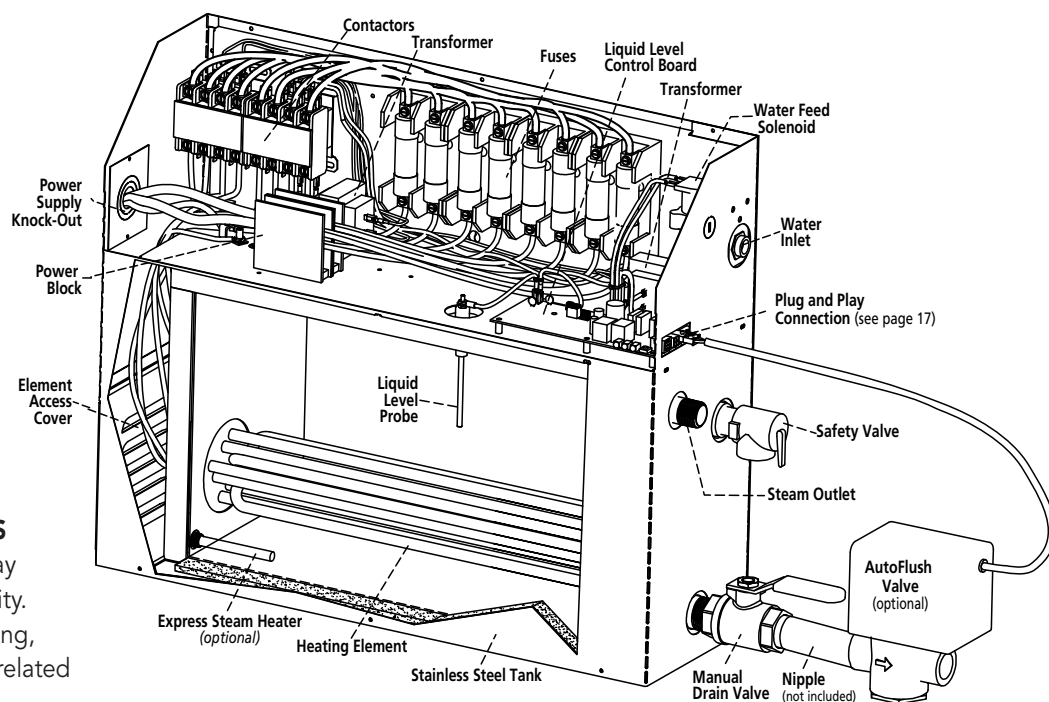


All drawings are for illustrative purposes only

PARTS IDENTIFICATION DIAGRAM

(shown with AutoFlush® with cover removed)

⚠ WARNING ALL DRAWINGS FOR ILLUSTRATIVE PURPOSES ONLY. Some components may be omitted or altered for clarity. Do not use for wiring, plumbing, repair or other purposes not related to component identification.



REPLACEMENT PARTS LIST

Part No.	Description	Generator
99178FCT	Drain Valve	All Models
99297	Safety Valve 15PSI	All Models
100479	Water Feed Solenoid Valve w/filter	All Models
10477-3	Transformer 24VAC	All Models
104288	Liquid Level Control Board	All Models
103904	Tandem Cable for 2 generators (12 ft.)	All Models
103917	Tandem Cable for up to 5 generators (30 ft.)	All Models
103990-60	Cable for iTempo & AirTempo Control (60 ft.)	All Models
104117-30	Cable for iSteam, AirTempo & iTempo (30 ft.)	All Models
104117-60	Cable for iSteam (60 ft)	All Models
MSTS	Remote Temperature Probe for iTempo/Plus and AirTempo	All Models
99012	Contactor 50A 3-pole	All 3-Phase Models

Part No.	Description	Generator
103453	Contactor 50A 4-pole	All 1-Phase Models
104423	Probe Assembly	All Models
99096MX	Heating Element Gasket	All Models
103938 Round	Acrylic Shield iTempo and iTempoPlus	All Models
103938 Square	Acrylic Shield iTempo and iTempoPlus	All Models
99314	Power Fuse 60A 250V	All Models
29201BMS	Heating Element 20 KW 208V	MX4E
29201CMS	Heating Element 20 KW 240V	MX4E
29241BMS	Heating Element 24 KW 208V	MX5E
29241CMS	Heating Element 24 KW 240V	MX5E
29301BMS	Heating Element 30 KW 208V	MX6E
29301CMS	Heating Element 30 KW 240V	MX6E

PLUMBING

GENERAL

⚠ CAUTION

1. All plumbing shall be performed by a qualified licensed plumber and in accordance with applicable National and local codes.

NOTICE Applies to 2-4

2. Use unions on all pipe connections as required for service and removal of the steam generator.
3. Use only brass piping or rigid copper tubing. Use only piping as permitted by codes.
4. Do not use black, galvanized, PVC pipe or PEX except as noted below.

WATER SUPPLY (3/8" NPT)

NOTICE Applies to 1-9

1. Install a shut off valve in the water supply line .
2. It is recommended to install a strainer in the water supply.
3. Install an anti-water hammer device as required.
4. Install an approved backflow preventer as required by local codes.
5. Connect the generator to a cold water line.
6. Water feed line may be flexible copper tubing, braided hose, PVC or PEX if permissible by local codes.
7. Do not overheat inlet solenoid valve with solder connections. Overheating will damage parts and result in a water leak.
8. Flush inlet water line thoroughly before making connection to the generator.
9. To reduce operating noise, reduce feed water pressure to between 15 - 20 psi is recommended. Optional pressure reducing valve part number 104198.

DRAIN (1" NPT)

⚠ WARNING Applies to 1-4

1. Do not connect the generator drain line to an undersink trap.
2. Do not plumb the generator drain and condensation pan drain together in such a way that will cause drain water to back into condensation pan. Water backing up into the Condensation Pan may overflow and cause a leak and property damage.
3. Do not drain into a steam enclosure or any location where accidental contact with drain water may occur. In the event of a power failure the AutoFlush valve will open and may discharge boiling water causing a scalding hazard.
4. Do not connect the drain valve to the steam line. Connecting the drain line to the steam supply line may allow boiling water to discharge through the steamhead causing a scalding hazard.

DRAIN (cont.)

NOTICE Applies to 5-8

5. A drain valve is provided to facilitate maintenance and servicing. Provide a drain line connection from steam bath generator drain valve according to National and local Codes.
6. Check local plumbing code for receptor, trap and vent requirements.
7. Do not connect Drain line and Safety Valve line together.
8. The steam generator drains by gravity. Plumb all drain lines accordingly.

SAFETY VALVE (3/4" NPT)

Where permitted by local codes, provide an outlet plumbing connection for safety valve.

⚠ WARNING Applies to 1-3

1. To insure proper and automatic safety valve operation: Do not connect a shut off valve or a plug at safety valve outlet.
2. Do not connect a shut off valve or any obstruction to the safety valve.
3. Do not connect the safety-valve output into the steam line.

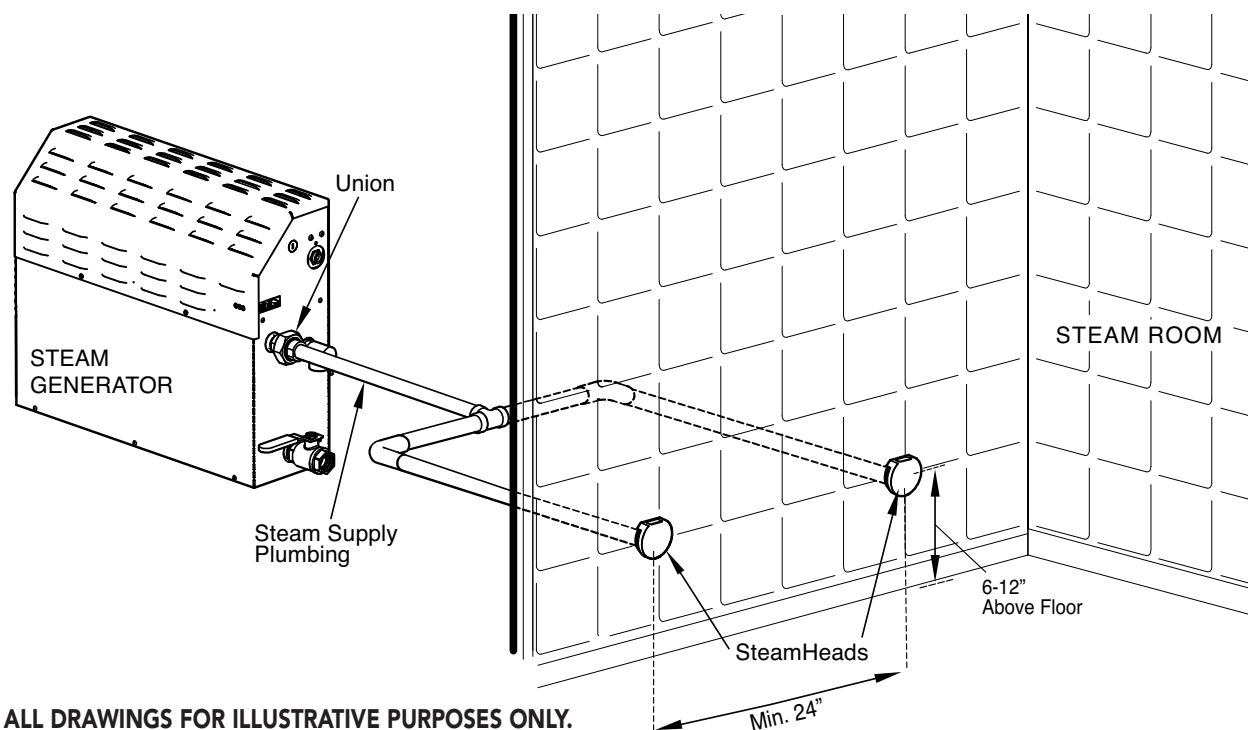
CONDENSATION PAN

⚠ CAUTION Applies to 1-4

1. MrSteam strongly recommends the use of a condensation pan in the unlikely event of a plumbing leak.
2. Check local plumbing codes for receptor, trap and vent requirements.
3. Condensation pans drain by gravity. The condensation pan is equipped with an integral 3/4" fitting. See page 19 for additional condensation pan installation information.
4. Do not plumb the generator drain and condensation pan drain together in such a way that will cause drain water to back into condensation pan and cause a leak and property damage.

Plumbing Specifications

MX4E-6E	
Water Inlet	3/8" NPT
Steam Outlet	3/4" NPT
Safety Valve	3/4" NPT
Manual Drain Valve	1" NPT
AutoFlush Valve	1" NPT

STEAM SUPPLY PLUMBING (3/4" NPT)

ALL DRAWINGS FOR ILLUSTRATIVE PURPOSES ONLY.

⚠ WARNING Applies to 1-5

1. Do not install any valve in steam line. The flow of steam must be unobstructed.
2. MAX Steam Generators are supplied with, and must be installed with two or more steam heads. Using less than two steam heads will result in too much steam coming out of the one steam head and may result in scalding and personal injury.
3. Never use less than two steam heads.
4. Never use less than 3/4" steam piping. Using less than 3/4" steam piping will result in too much steam coming out of the steam heads and may result in scalding and personal injury.
5. Install steam piping as required (including routing, fittings and length of pipe) to insure an equal amount of steam reaches each steam head. Unequal steam piping will result in too much steam coming out of the steam heads and may result in scalding and personal injury.

⚠ CAUTION Applies to 6-10

6. Use brass pipe or copper tubing from unit to steam head as permitted by codes.
7. Insulate steam line with fiberglass pipe insulation or similar insulation rated 212° F or higher.

8. Pitch steam line 1/4" per foot towards steam head or steam generator to avoid valleys and trapping of condensate. Running the steam line down and then up will create a steam trap blocking the flow of steam.
9. Do not install piping so one steam head has more steam than the other steam head. Installing piping so one steam head has more steam than the other steam head may result in an excessive amount of steam to one steam, resulting in a scalding or burn hazard.
10. Consult with qualified designer, architect or contractor for steam room construction details.

AROMASTEAM

NOTICE If the optional AromaSteam Fragrance Delivery System (PN: MS AROMA) is to be installed, a 90 degree T plumbing fitting must be installed at a designated location on the steam supply line. See the MrSteam AromaSteam Operation and Instruction Manual (PN: 100402) for installation information before the steam line is installed at the technical downloads section of www.mrsteam.com.

ELECTRICAL

⚠ WARNING Applies to 1-9

1. Never use damaged equipment, doing so may result in an inoperative or hazardous installation.
2. All electrical wiring to be installed by a qualified licensed electrician in accordance with National Electrical Code and local electrical code.
3. Connect electrical power supply to the power block only. Do not connect power supply directly to elements. Connecting power directly to the elements may result in a dry fire and result in elevated temperatures and a fire hazard.
4. For 208V units do not apply more than 218V service.
5. Use minimum 90° C/300V rated insulated copper conductors only, sized in accordance with National Electrical Code and local electrical code for the current in Ampere Chart. If allowed by codes, NM cable may require a larger wire size than as listed on the chart.
6. Connect suitably sized equipment grounding wire to ground terminal provided. Neutral (white) wire is not required for 208V and 240V units.
7. Provide suitable over-current protection (fuses or circuit breaker)
8. Provide a power supply disconnect within sight of the steam generator or one that is capable of being locked in the open position as required by code.
9. Wire size (AWG) is based on minimum 90° C rated THHN copper conductors. Refer to the National Electric Code for other types of conductors.

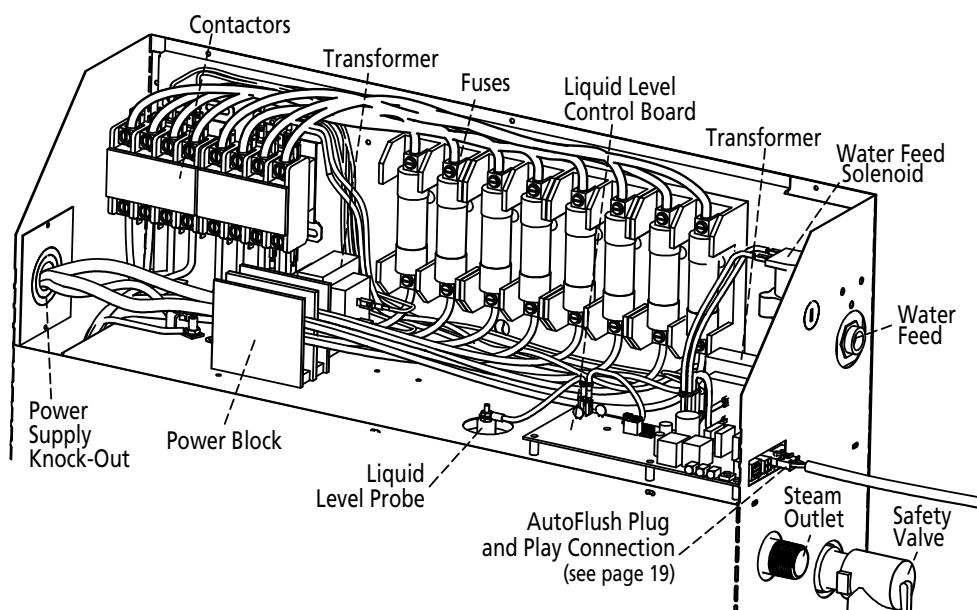
ELECTRICAL CHART

Model No.	Vol (Cu. Ft.*)	Max Room KW	Volts†	Phase	Amps	Wire Size (AWG) for 25° C
MX4E	875	20	208	1	96	1
				3	56	4
			240	1	83	3
				3	48	6
MX5E	1075	24	208	1	115	1/0
				3	67	4
			240	1	100	1
				3	58	6
MX6E	1275	30	208	1	144	3/0
				3	83	3
			240	1	125	2/0
				3	72	3

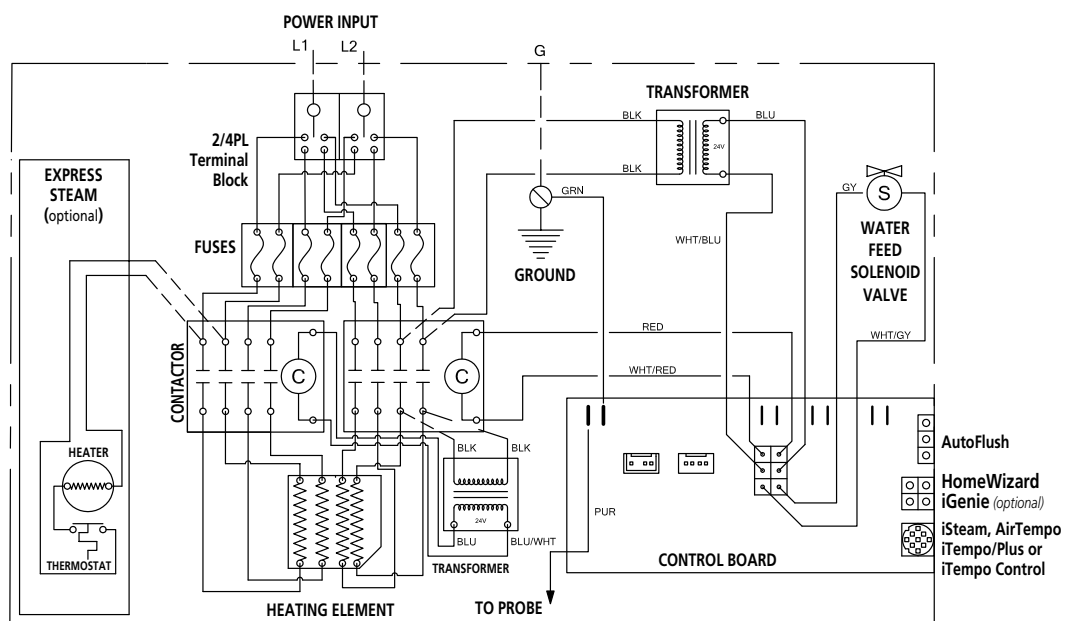
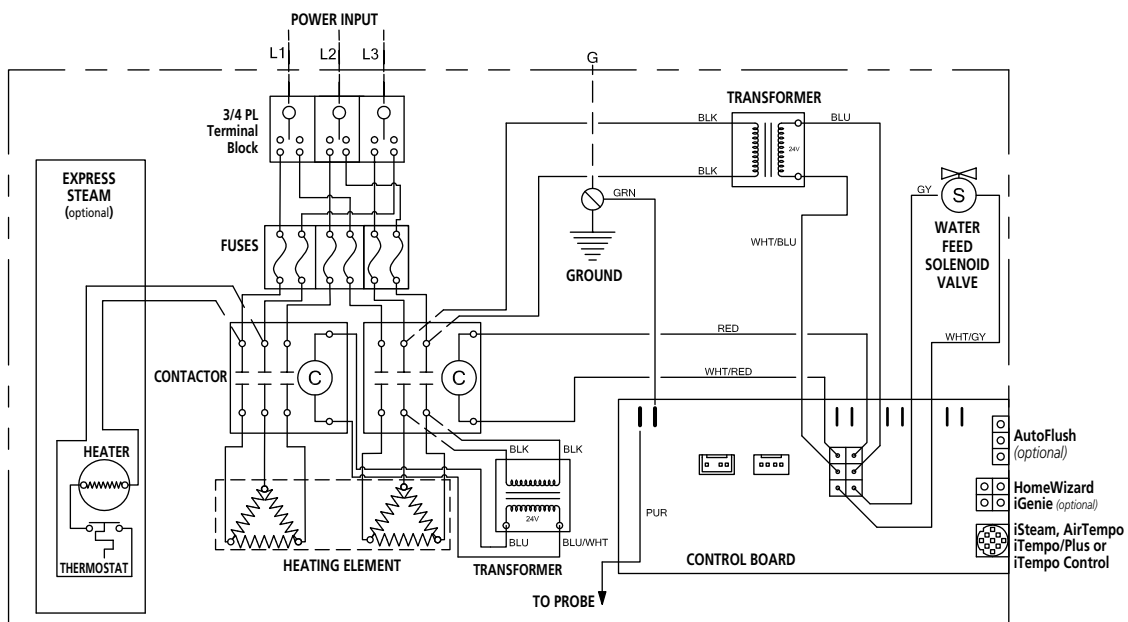
* See page 5 for room sizing

†All specifications shown are for 208V and 240V.

Consult factory for other voltage specifications.



All drawings are for illustrative purposes only

SINGLE PHASE 208/240 VOLT WIRING DIAGRAM**MODELS MX4E, MX5E, MX6E****THREE PHASE 208/240 VOLT WIRING DIAGRAM****MODELS MX4E, MX5E, MX6E**

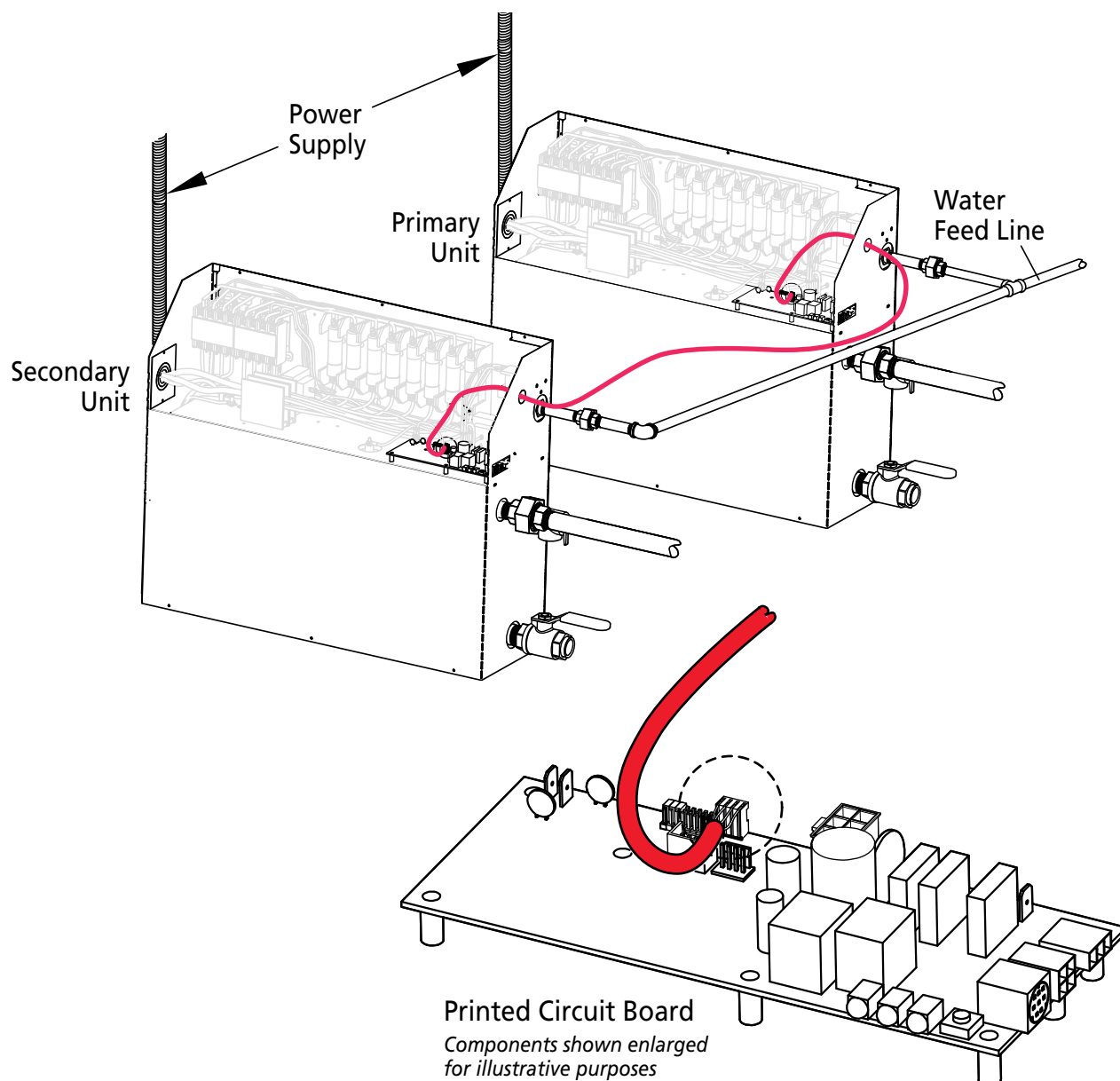
CONNECTING MULTIPLE GENERATORS IN TANDEM

CAUTION Applies to 1-2

1. Install each unit as in a single installation. Install the two generators as close to each other as possible, while providing for all clearances as shown on page 6.
2. Shock hazard. Power must be disconnected at the main electrical supply before removing steam generator covers.

NOTICE Applies to 3-6

3. Connect the iSteam®, AirTempo®, iTempo/Plus® or iTempo control to either generator per the control instructions..
4. Connect the generators with a tandem cable as follows:
 - Use Tandem Cable part number 103904 to connect two generators (cable is 12' long)
 - Use Tandem Cable part number 103917 to connect 3-5 generators (cable is 30' long).
5. Remove one knock-out on each generator. Insert the ends of interconnecting cable provided (PN 103904) through the knock-outs. Connect each end to the printed circuit board as shown.
6. Connect separate plumbing and power supplies for each unit.



POST INSTALLATION

STEAM GENERATOR SYSTEM START-UP AND CHECKOUT

1. Turn the control ON. Follow specific instructions provided with the controls.
2. Steam will begin to appear in approximately 5 minutes (unless equipped with factory-installed Express Steam option) at the steam head. Steam will shut OFF when desired temperature is reached and will automatically resume when room temperature drops below the desired temperature.
3. Steam will shut OFF when control counts down to zero. To shut steam off manually, turn control OFF. To clear steam from enclosure area, turn shower ON before opening door.
4. If unit does not start and control does not turn ON (control display does not light up) then turn breaker off for 20 seconds and try again.
5. Check all internal and external plumbing fittings for leaks while the steam is ON.

TROUBLESHOOTING

⚠ WARNING Applies to 1-2

1. Electric shock hazard. MrSteam steam generators are connected to 240V line voltage and contain live electrical components. All installation and service to be performed by qualified and licensed electricians and plumbers only. Installation or service by unqualified persons or failure to use MrSteam parts may result in property damage or in a personal injury.
2. Do not disassemble or service any components. Internal components contain no serviceable parts.

NOTICE The model and serial number is printed on the data plate on the front of the steam bath generator. Please have this information available when contacting Technical Services.

Step 1 Check main incoming power to the unit.

Step 2 Ensure the black wires from the primary side of the transformer are connected to the quick connect tabs on the line side of the contactor.

Step 3 Verify that 24 VAC is coming out of the transformer, WHT & WHT/BLU wires, into the board.

Step 4 Verify that the green light on the PC board is ON.

Step 5 Push the white test button to run the generator for a 10 minute test cycle. Make sure the steam room is empty.

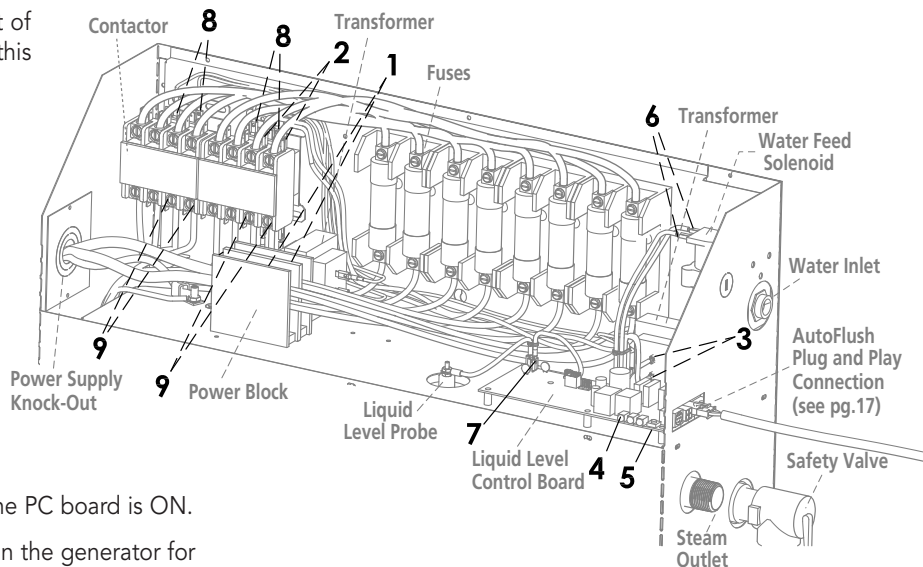
Step 6 Verify 24 VAC to the water feed solenoid, GRY & WHT/GRY wires (will fill when needed).

Step 7 Temporarily short out the WLS (Purple wire) and GND (Green wire) terminals and verify that the contactor engages.

Step 8 When the red light is ON, verify 24 VAC, RED & WHT/RED wires, to the contactor.

Step 9 Check main voltage on the load side of the contactor when it is engaged.

Step 10 If all steps on the power path were verified, turn OFF power to the unit and remove the heating element via the left hand access panel for inspection.



The steam generator represented in this illustration is for reference purposes only. Please contact MrSteam for specific product information.

CONTROL STATUS CODES

The control (either iSteam®, AirTempo®, iTempo® or iTempo/Plus®) may display a status code if the steam generator is not functioning properly.

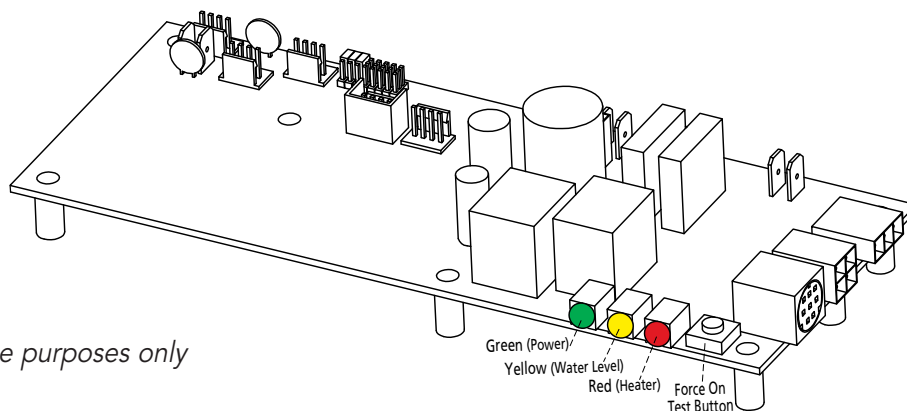
Code	Code Meaning	Probable Cause	Suggested Remedy
H20	Water level is not satisfied within 5 minutes	Water Supply is off	Turn on Water Supply
		Defective water feed solenoid	Check/replace water solenoid valve
		Water feed probe not functioning	Check/clean probe. Check probe wiring
		Drain Valve Open	Check/Close drain valve
		AutoFlush not functioning	Check/Replace AutoFlush
Prr1 or Prr2	Temperature Probe Error	Control cable/MSTS cable cut	Replace control cable/MSTS
		Internal problem with control/MSTS	Replace control / MSTS
Err1	Incorrect Field Supply Voltage (green light on liquid level control board will be off)	Incorrect voltage supplied to Generator	Supply steam generator with the correct voltage noted on the data plate label
Err2	Button on control is pressed for more than 5 minutes	Control cover misalignment	Remove and reinstall control cover
		Debris behind control cover	Remove control cover and clean cover, control and keypad with a damp cloth
Errb	Water level not satisfied in a tandem set up - Check secondary generators, see H20.		
Err7	Liquid Level Control Board malfunction	Memory error in LLCB	Press ON/OFF to clear. Replace control if code remains

LIQUID LEVEL CONTROL BOARD Explanation of LED Indicators

⚠ WARNING Electric shock hazard. MrSteam steam generators are connected to 240V line voltage and contain live electrical components. All installation and service to be performed by qualified and licensed electricians and plumbers only. Installation or service by unqualified persons or failure to use MrSteam parts may result in property damage or in a personal injury.

GREEN	LED is ON when there is 208/240 Volt incoming power connected, 24 Volt transformer secondary output and on-board 5 Volt DC control power are present.
YELLOW	Water level indicator-LED is OFF when no water is detected (for more than 5 seconds). ON when water level is satisfactory. For units with AutoFlush, if more than five hours have elapsed since last usage and this LED is ON it is indicative of an AutoFlush or water level probe circuit malfunction.
RED	Contact relay indicator-LED is ON when relay is closed and sending 24 Volts to the contactor coil. (This LED comes ON if the generator is ON.)
FORCE ON TEST BUTTON	Press this button to operate the generator. This button is for trouble shooting only and will operate if a control is connected or not. Pressing the button again will shut the generator OFF. The test button will only allow the generator to operate for 10 minutes.

**Liquid Level Control Board
PN 104288**
(shown without wiring)



All drawings are for illustrative purposes only

ASSESSORIES

CONTROL INSTALLATION

Refer to Installation Instructions for the specific control

⚠ WARNING Applies to 1-5

1. A peel and stick warning sticker must be read and permanently affixed in a conspicuous location near the steam room. Failure to read and affix this warning sticker in a conspicuous location may result in serious injury or death.
2. Install the iSteam, AirTempo, iTempo or iTempo/Plus controls according to installation instructions. Failure to install according to instructions will result in an inoperative control or hazardous overheating or inadequate heating of the steam room.
3. If an iSteam, AirTempo, iTempo or iTempo/Plus control is installed outside the steam room a Remote Temperature Probe (PN MSTS) must be installed inside the steam room per installation instructions supplied with the Remote Temperature Probe. Failure to install according to instructions will result in an inoperative control and overheating of the steam room.
4. Do not route iSteam, AirTempo, iTempo/Plus, iTempo, HomeWizard or iGenie control wiring inside conduit together with power lines or close to hot water or steam piping. Doing so may result in an inoperative or hazardous installation.
5. Do not alter or modify any MrSteam product. Doing so may result in an inoperative or hazardous installation and will void the UL listing and warranty.

⚠ CAUTION Applies to 6-7

6. To avoid unintentional steambath operation, do not locate the control where other controls, accessories, shower heads, valves, body sprays or similar within the shower could cause confusion or interfere with the MrSteam control's intended use and function.
7. Do not use any iSteam®, AirTempo®, iTempo/Plus®, iTempo®, HomeWizard® or iGenie® controls without reading and understanding its own manual and the MrSteam steam generator Installation and Operation Manual. Failure to read and understand these instructions may result in an inoperative or hazardous installation.

NOTICE Applies to 8-10

8. Turn power to the steam generator OFF before connecting the control to the generator. Failure to turn the power off will result in an inoperable control.
9. Do not operate iSteam, AirTempo, iTempo/Plus, iTempo, HomeWizard or iGenie controls with other than a MrSteam iSteam, AirTempo, or iTempo compatible steam generator. MrSteam residential steam generators with serial numbers lower than 900000, or any other brand of steam generator are not to be operated with iTempo controls. Doing so may result in an inoperative or hazardous installation. If iSteam is used with a generator having serial number 900000 through 170010000, contact MrSteam technical support for an upgraded PC board.
10. Discontinue use of the steam generator or control if the steam generator is damaged or otherwise not functioning properly. Operating a damaged steam generator may result in an inoperative or hazardous installation.

CONTROL ROUGH IN

Refer to Installation Instructions for the specific control

⚠ WARNING Applies to 1-4

1. If the control is installed inside the steam room the control must be located 4-5 feet above the floor near the bather seating area.
2. The control features an integral temperature sensor. Locate the control in a location representative of the desired steam bathing temperatures. Do not locate the control above or near the steam head or direct steam emissions. Locating the control near the steamhead will not allow the temperature sensor to record the correct room temperature and result in inadequate heating.
3. Locate the control on a vertical wall.
4. If the control is installed outside the steam room a Remote Temperature Probe Part Number MSTS must be installed inside the steam room, depending on the control. See instructions for the MSTS Temperature Probe (located in the Control Installation Manual related to your specific control package) before rough-in or installation of control.

NOTICE Applies to 5-8

5. The control cable should be run in a dedicated 1" conduit to facilitate installation and service.
6. Determine the desired installation location of the control. The iSteam®, AirTempo®, iTempo® and iTempoPlus controls are designed to be installed inside or outside the steam room as a matter of personal preference.
7. Ensure MrSteam steam generator is iSteam, AirTempo or iTempo compatible and has a serial number 900000 or higher. If iSteam is used with a generator having serial number 900000 through 170010000 contact MrSteam technical support for an upgraded PC board.
8. The iSteam and iTempo control cable length is 30 feet. Ensure that the control and/or steam generator are located accordingly. An optional 60 foot cable is available, PN 103990-60 for AirTempo and iTempo and PN 104117-60 for iSteam. Contact a MrSteam technical service representative if a 60 foot cable is required. Excess control cable should be neatly coiled and twisted into a figure 8. The AirTempo dongle is provided with a 3 foot cable. The maximum cable length is 60 feet.

OPTIONAL AUTOFLUSH®

OPERATION

The optional AutoFlush System feature automatically drains the MrSteam generator following each use. A time delay allows the water to cool down (about two hours) before it drains by gravity for a safe and gentle operation.

If the Express Steam® option has been installed, the AutoFlush will drain for ten minutes then refill with fresh water to begin the pre-heat cycle.

INSTALLATION

SWEAT FITTINGS When using sweat fittings use only tin base solder with a melting point below 600 degrees F. Do not overheat. Ends of water supply tubing must be thoroughly clean for a minimum distance of 1" from ends. Do not remove valve cover.

WARNING Applies to 1-4

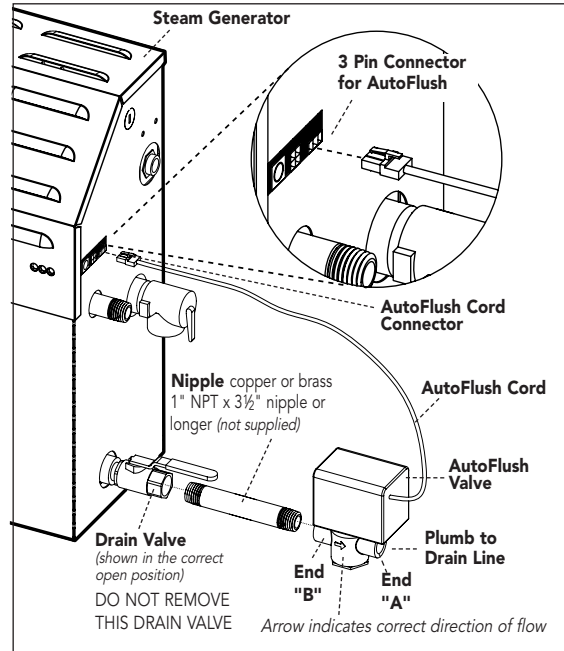
1. Do not connect the generator drain line to an undersink trap.
2. Do not plumb the generator drain and condensation pan drain together in such a way that will cause drain water to back into condensation pan. Water backing up into the Drain Pan may overflow and cause a leak and property damage.
3. Do not drain into a steam enclosure or any location where accidental contact with drain water may occur. In the event of a power failure the AutoFlush valve will open and may discharge boiling water causing a scalding hazard.
4. Do not connect the drain valve to the steam line. Connecting the drain line to the steam supply line may allow boiling water to discharge through the steamhead causing a scalding hazard.

CAUTION

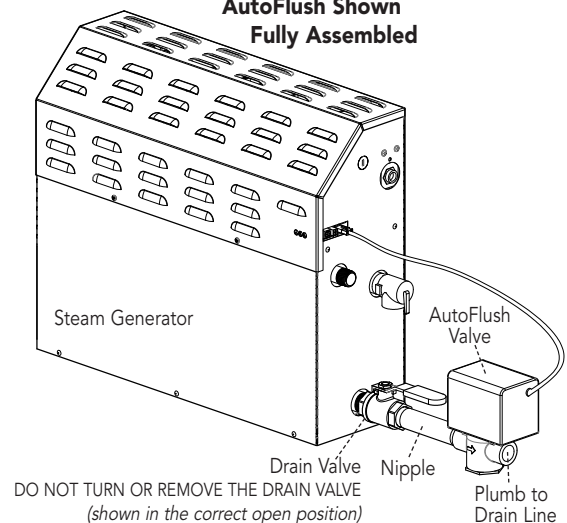
5. Do not remove the drain valve. Removal may cause equipment and property damage. If there is not enough room for the valve, an elbow and a short nipple (not provided) can be added.

NOTICE Applies to 6-14

6. A drain valve is provided to facilitate maintenance and servicing. Provide a drain line connection from steam bath generator drain valve according to National and Local Codes.
7. Check local plumbing code for receptor, trap and vent requirements.
8. Do not connect Drain line and Safety Valve line together.
9. The steam generator drains by gravity. Plumb all drain lines accordingly.
10. The Drain is open when the Drain Valve handle is aligned with brass nipple.
11. Connect the AutoFlush System cord connector to the three pin connector as shown.
12. Plumbing to be performed by a qualified plumber and shall be in accordance with applicable national and local codes. Unit drains by gravity. A drain line that is lower than the AutoFlush® assembly must be available. The AutoFlush System valve outlet is 1/2" NPT. Check plumbing code for receptor, trap and vent requirements.



AutoFlush Shown Fully Assembled



13. Use copper or brass nipple 1/2" NPT x 3 1/2" or longer (not supplied) to connect AutoFlush valve (end "B") to the Drain Valve (valve end "A" and "B" are indicated on bottom of AutoFlush Valve).
14. An arrow on the AutoFlush valve indicates the correct direction of flow.

TO CHECK OPERATION

1. Turn ON MrSteam and allow tank to fill with water.
2. Turn OFF MrSteam control. Water should stay in tank.
3. Turn OFF power at the panel box. Water should discharge from tank.
4. Turn ON power at panel box.
5. Repeat.

All drawings are for illustrative purposes only

STEAMHEAD INSTALLATION

⚠ WARNING Applies to 1-2

1. To reduce steam velocity and noise, a minimum of two steam heads must be used for MAX series. See page 10 for steamhead piping.
2. Because the steam head and direct steam emissions are very hot, locate the steam head where incidental contact by bather with the steam head or direct steam emission cannot occur.

⚠ CAUTION Applies to 3-4

3. Contact the supplier of acrylic, fiberglass and other non-heat resistant enclosures for recommended steamhead location. Use Acrylic Shield PN MS-103938 (round) or PN MS-103938SQ (square). See instructions provided with steam shield.
4. Do not disassemble steamhead. MrSteam's steamhead is shipped fully assembled and requires no additional assembly. Disassembly of the steamhead may result in exposure to the internal components and may result in a burn hazard.

NOTICE Applies to 5-6

5. A 1½" clearance hole around the steam pipe is needed to mount the steamhead.
6. To preserve steam head finish, do not use wrench or other tools to tighten. Do not use abrasive cleansers or chemicals. Use only water with mild soap and a non-abrasive sponge.

STEP 1

Locate steamheads 6-12 inches above floor, except for:

1. Tub/shower enclosures, install 6 inches above tub top edge.
2. For enclosures of acrylic or other non-heat resistant materials, consult the supplier and install Acrylic Shield Part Number MS-103938.
3. To prevent door seals or any material, product or surface from deteriorating, do not locate the steamheads where direct steam emission would come in direct contact.

STEP 2

Install steamheads with the oil well facing up as shown. Hand tightening is sufficient when teflon or equal pipe thread sealing compound is used.

STEP 3

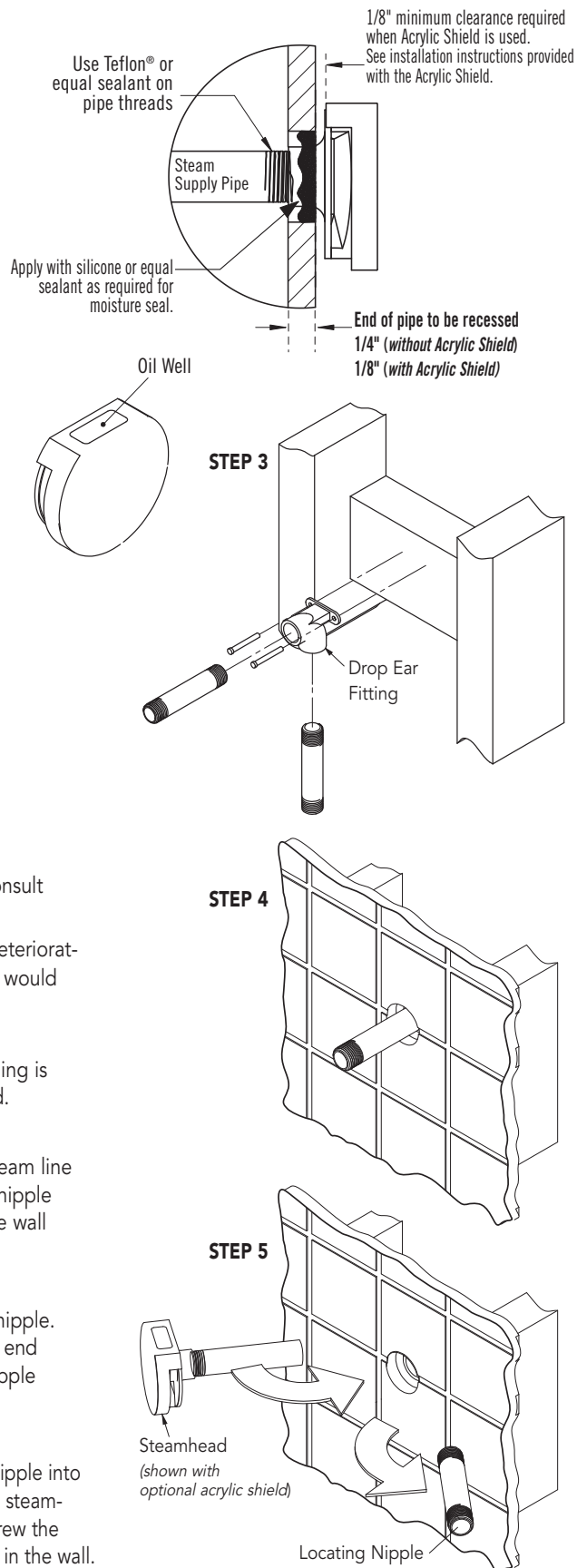
Secure a bronze drop ear fitting to a header and run a ¾" copper steam line from the steam generator to the drop ear fitting. Install a temporary nipple (6" or longer) in the drop ear fitting to locate the steamhead after the wall is finished.

STEP 4

After the wall has been finished, mark the surface of the wall on the nipple. Remove the nipple and measure the portion that was in the wall (the end to your mark). Subtract ¼" from that dimension and select a brass nipple of that length to finish the installation.

STEP 5

Wrap teflon tape around the threads of the new nipple and screw the nipple into the steamhead. Do not use wrenches or tools which would damage the steamhead's finish. Wrap teflon tape around the threads of the nipple and screw the nipple and steamhead assembly you just made into the drop ear fitting in the wall. The steamhead should be flush with the wall and the well must be facing up.

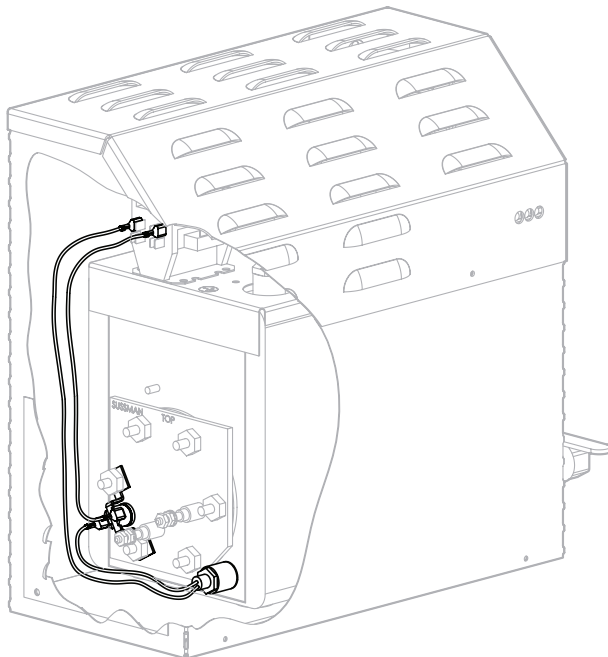
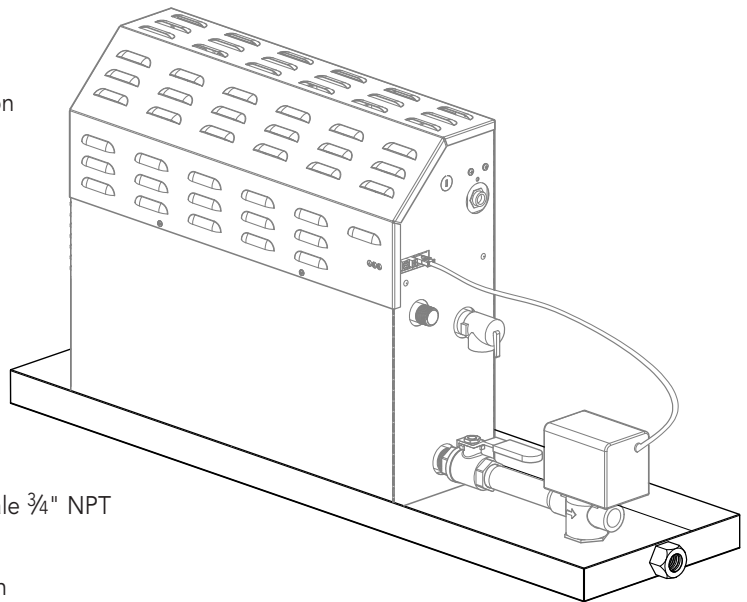


All drawings are for illustrative purposes only

OPTIONAL CONDENSATION PAN

⚠ CAUTION Applies to 1-7

1. MrSteam strongly recommends the use of a condensation pan in the unlikely event of a plumbing leak.
2. Locate the condensation pan on a solid level surface and place the steam generator inside the condensation pan. Ensure the steam generator is level (see page 4 for locating the steam generator).
3. All plumbing shall be performed by a qualified licensed plumber and in accordance with applicable national and local codes. Check local plumbing code for receptor, trap and vent requirements.
4. Condensation pans drain by gravity.
5. The condensation pan is equipped with an integral female $\frac{3}{4}$ " NPT fitting for connection to the drain.
6. Do not plumb the generator drain and condensation pan drain together in such a way that will cause drain water to back into condensation pan and cause a leak and property damage.
7. See pages 9 and 17 for complete plumbing and drain line instructions.



OPTIONAL EXPRESS STEAM®

(only available factory installed)

Available for all MAX Models. Express Steam generators are equipped with a low power heating element and thermostat to keep the water in the tank warm enough to bring up steam quicker. All Express Steam components and wiring are installed at the factory. No additional wiring or plumbing is required by installers.

HOMEOWNER SECTION

IMPORTANT SAFETY INFORMATION

As you follow these instructions, you will notice warning and caution symbols. This blocked information is important for the safe and efficient installation and operation of this generator. These are types of potential hazards that may occur during installation and operation:

⚠ WARNING Indicates a potentially hazardous situation, which, if not avoided, could result in death or serious injury.

⚠ CAUTION Indicates a potentially hazardous situation, which, if not avoided may result in minor or moderate injury or product damage.

NOTICE This highlights information that is especially relevant to a problem-free installation.

All information in these instructions is based on the latest product information available at the time of publication. Sussman-Automatic Corporation reserves the right to make changes at any time without notice.

⚠ WARNING Applies to 1-12

1. Never use damaged equipment, doing so may result in an inoperative or hazardous installation.
2. Discontinue use of the steam generator and control if the steam generator or control are damaged or otherwise not functioning properly. Using damaged equipment may result in an inoperative or hazardous installation.
3. The MAX series of steam generators are for residential use only. Commercial or other nonresidential applications void the warranty and may adversely affect product performance and may represent a safety hazard.
4. Read these instructions before installation operation or service.
5. Although the MAX steambath generators have been fully qualified for shipment by MrSteam®, the following must be reviewed for proper, safe and enjoyable steam bathing:
 - Verify that the model and accessories specifications are correct for the incoming line voltage.
 - Ensure steambath generator has been correctly sized for the steam room. Pay particular attention to room volume and construction. If any questions, please refer to MrSteam sizing and selection guide on page 5 or call MrSteam.
6. Supervise children at all times.
7. Steam is hot and can cause injury or death if improperly used. Steam rooms contain steam and elevated temperatures. Please read and observe all warnings in this manual before installing or using a steam room.
8. Prolonged use of the steam system can raise excessively the internal human body temperature and impair the body's ability to regulate its internal temperature (hyperthermia). Limit your use of steam to 10-15 minutes until you are certain of your body's reaction.
9. Excessive temperatures have a high potential for causing fetal damage during the early months of pregnancy. Pregnancy or possibly pregnant women should consult a physician regarding correct exposure.
10. Obese persons and persons with a history of heart disease, low or high blood pressure, circulatory system problems, or diabetes should consult a physician before using a steambath.
11. Persons using medication should consult a physician before using a steambath since some medication may

induce drowsiness while other medications may affect heart rate, blood pressure and circulation.

12. Electric shock hazard. MrSteam steam generators are connected to 240V line voltage and contain live electrical components. All installation and service to be performed by qualified and licensed electricians and plumbers only. Installation or service by unqualified persons or failure to use MrSteam parts may result in property damage or in a personal injury.

⚠ CAUTION Applies to 13-17

13. The wet surfaces of steam enclosures may be slippery. Use care when entering or leaving.
14. The steam head is hot. Do not touch the steam head and avoid the steam near the steam head.
15. In considering the purchase or use of this steambath system, please note that if you are pregnant, have a coronary condition, are in poor health, are being treated for any other medical condition, or are using medication or drugs, MrSteam recommends that you obtain the approval of a physician before use. For information about this product and safety issues, call 1.800.76.STEAM.
16. The information in this manual should be used in conjunction with consultations with an architect, designer and contractor in determining factors necessary in providing a suitable and safe steam room.
17. MrSteam steam generators are intended to be operated with MrSteam controls and accessories only, and are to be installed strictly in accordance with the specific instructions contained in this manual and as supplied in the manuals provided with the controls or accessories.

NOTICE Applies to 18-23

18. This document contains important safety, operation and maintenance information. Leave this document with the homeowner. Do not discard this document.
19. Consider any controls and accessories before initiating installation. Read the Installation and Operation Manual of all controls and accessories available at www.mrsteam.com
20. Record the model and serial number of the steam generator in the space provided in the table of contents of this manual.

IMPORTANT SAFETY INFORMATION (cont.)

NOTICE (cont.)

21. If acrylic, fiberglass or other non-heat resistant materials are used as part of the steam room enclosure consult with the material manufacture and see page. 18, " Steamhead Installation" for additional details.
22. Carefully inspect the steam generator and packaging for shipping damage. In the event of shipping damage, please contact the carrier for claim information. MrSteam customer service department can assist you with any missing or damaged parts.
23. The physical size of the steam generator, clearance for plumbing servicing, and its distance from the steam room must all be considered before installation.

WARNING

HYPERTHERMIA occurs when the internal temperature of the body reaches a level several degrees above the normal body temperature of 98.6° F. The symptoms of hyperthermia include an increase in the internal temperature of the body, dizziness, lethargy, drowsiness, and fainting. The effects of hyperthermia include:

- a) Failure to perceive heat;
- b) Failure to recognize the need to exit the steambath;
- c) Unawareness of impending risk;
- d) Fetal damage in pregnant women;
- e) Physical inability to exit the steambath
- f) Unconsciousness.

The use of alcohol, drugs, or medication can greatly increase the risk of hyperthermia.

WARNING

The peel and stick warning label located in this manual is an essential part of providing a safe environment for steam room users. The peel and stick warning label must be applied to the wall of the shower or steam enclosure, at a point that is visible to all users. Failure to install this sticker may result in serious injury or death.

The location where this owner's manual is kept shall be written in the space provided on the label using permanent ink.

For a replacement warning label contact MrSteam customer service at 1-800-76-STEAM or hello@mrsteam.com

! WARNING

REDUCE THE RISK OF OVERHEATING AND SCALDING

1. EXIT IMMEDIATELY IF UNCOMFORTABLE, DIZZY OR SLEEPY. STAYING TOO LONG IN A HEATED AREA IS CAPABLE OF CAUSING OVERHEATING.
2. SUPERVISE CHILDREN AT ALL TIMES.
3. CHECK WITH A DOCTOR BEFORE USE IF PREGNANT, DIABETIC, IN POOR HEALTH OR UNDER MEDICAL CARE.
4. BREATHING HEATED AIR IN CONJUNCTION WITH CONSUMPTION OF ALCOHOL, DRUGS, OR MEDICATION IS CAPABLE OF CAUSING UNCONSCIOUSNESS.
5. DO NOT CONTACT STEAM HEAD OR STEAM AT THE STEAM HEAD.

REDUCE THE RISK OF SLIPPING AND FALL INJURY

1. USE CARE WHEN ENTERING OR EXITING THE STEAM ROOM. FLOOR MAY BE SLIPPERY

NOTE: FOR ADDITIONAL SAFETY CONSIDERATIONS SEE OWNER'S MANUAL WHICH IS KEPT: _____

THE OWNER'S MANUAL CAN BE FOUND AT WWW.MRSTEAM.COM

USE OF STEAM ROOM IN CONJUNCTION WITH CONSUMPTION OF ALCOHOL CAN BE DANGEROUS AND CAN RESULT IN INJURY THROUGH SLIP AND FALL OR OTHERWISE.

mr.steam® 43-20 30th Street, Long Island City, NY 11101 1 800 76 STEAM www.mrsteam.com TUL100376 4.18

Not Actual Size

SETTING THE STEAM BATH TEMPERATURE AND DURATION

WARNING

Set the steam bathing temperature according to personal preference, however it is highly recommended to begin steam bathing at a low temperature setting to gauge comfort and safety levels. Set duration to a maximum of 10 minutes to gauge comfort and safety levels. This will allow the steam generator to heat up and begin producing steam.

SAFETY AND OPERATING INFORMATION

WARNING

Applies to 1-5

1. Do not install or use any iSteam®, AirTempo®, Tempo/Plus®, iTempo®, HomeWizard® or iGenie® controls without reading and understanding the MrSteam steam generator Installation and Operation Manual. Failure to read and understand these instructions may result in an inoperative or hazardous installation.
2. The peel and stick warning label located in the manual provided with the steam bath generator must be read and permanently affixed in a conspicuous location near the steam room. Failure to read and affix this warning sticker in a conspicuous location may result in serious injury or death.

3. If an iSteam, AirTempo, iTempo or iTempo/Plus control is installed outside the steam room a Remote Temperature Probe (PN MST5) must be installed inside the steam room per installation instructions supplied with the Remote Temperature Probe. Failure to install according to instructions will result in an inoperative control and overheating of the steam room.
4. To prevent slip and fall hazards non-slip strips must be installed on the steam room floor.
5. Do not alter or modify any MrSteam product. Doing so may result in an inoperative or hazardous installation and will void the UL listing and warranty.

CAUTION

Discontinue use of the steam generator or control if the steam generator is damaged or otherwise not functioning properly. Doing so may result in an inoperative or hazardous condition.

NOTICE

Malfunction due to power spikes, lightning, fire, freezing or flooding is not covered under the warranty.

CARE TIPS FOR ALL CONTROLS AND STEAMHEADS

1. Use only mild soap and water on a soft cloth to clean the control and steamhead.
2. Do not use abrasive cleansers.
3. If the decorative cover is damaged on the iTempo or iTempo/Plus call MrSteam technical service for replacement parts.

NOTICE Replacement of the decorative covers requires removal and reinstallation of the control from the mounting surfaces.

STEAM GENERATOR MAINTENANCE

MrSteam steambath generators require little maintenance. Other than periodic draining, maintenance procedures are minimal. Every 2 months, or more often in "hard" water areas, the manual drain valve should be opened fully flushing out accumulated materials, salts and other particles which are natural by-products of boiling water.

WARNING Applies to 1-2

1. Draining immediately after a steam cycle may expose PVC and other piping to high temperature water. Check local codes. The unit will refill automatically when the control is activated again. In areas of hard water, a MrSteam AutoFlush® system is recommended for generator longevity.
2. Failure to allow the water to cool will expose the equipment and user to scalding water and cause property and personal injury.

CAUTION Flush a minimum of two-three hours after the control has been turned off to insure that the water has cooled.

NOTICE The model and serial number is printed on the data plate on the front of the steam bath generator. Have this information available when contacting Technical Service,

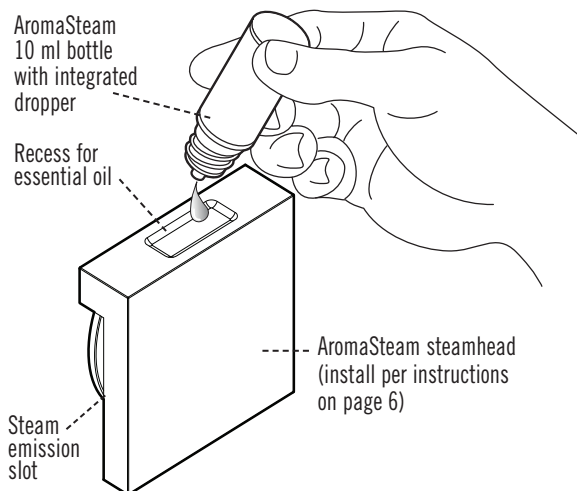
USING MRSTEAM® ESSENTIAL OILS

Enjoy AromaSteam essential oils by placing a drop or two into an unheated AromaSteam steamhead as shown in the illustration. Only use MrSteam AromaSteam essential oils in the MrSteam AromaSteam steamhead.

WARNING Essential oils and/or aroma therapy can cause inflammation, burns, headache, nausea and allergic reactions. Consult a physician before using aroma therapy.

CAUTION Applies to 1-6

1. Use essential oils with caution. Essential oils are for external use only. Keep out of reach of children. Essential oils are highly concentrated and are potent substances and should not be applied directly to the skin as they can be irritants. Use essential oils with caution.
2. Place the drops into the MrSteam AromaSteam steamhead recess prior to turning on the steambath. Do not place drops in a hot steam head as serious injury can result if you do not follow this warning.
3. Start with one drop to gauge strength and suitability. Limit to a maximum of a few drops for a steam bathing session.
4. The bather should exit the steambath immediately if dizziness occurs. If skin irritation occurs stop using the



oils immediately. Remove any excess oil by washing in mild soap and water. If ingested, rinse mouth with water. Administer water or milk to dilute. Contact a physician immediately.

5. Aromatic oils should be added to steamhead before turning on the steambath unit. DO NOT add oil during steam bathing or when the steam head is heated
6. Tightly close bottles when storing oils. Keep bottles away from sources of ignition.

WARRANTY

To view or download the MrSteam Residential Generator Warranty and register your Product go to: **www.mrsteam.com**

mr.steam[®]

Feel Good Inc.[®]

www.mrsteam.com

Products, information and specifications are subject to change without notice.

Please call Sales & Support at 1.800.76.STEAM (East Coast) or 1.800.72.STEAM (West Coast) for more information.

mr.steam[®] Sussman-Automatic Corporation[®] | hello@mrsteam.com | www.mrsteam.com

43-20 34th Street, Long Island City, NY 11101 TEL: 1 800 76 STEAM | 9410 S. La Cienega Blvd. Inglewood CA 90301 TEL: 1 800 72 STEAM

2019 © Sussman-Automatic Corporation | MrSteam and des., A Lifetime of Pleasure, AirTempo, AromaFlo, AudioWizard, AutoFlush, AutoSteam, Butler Package, ChromaSteam, Clean Steam...Every Time, Club Therapy, CT Day Spa, Digital 1, Express Steam, Feel Good Inc., From Bathroom to Spa, HomeWizard, iButler, iGenie, iSpa Package, iSteam, iTempo, iTempo/Plus, Linear Steamhead, Making Wellness a Way of Life, Music Therapy, My Steam, SmartSizing, Spa Package, Steam Genie, Steam on Demand, Steam in a Box, Steam@Home, SteamStart, SteamTherapy, Sussman, Tala, Tala Bath & Body, Tempo, The Intelligent Steambath, Valet Package, and Virtual Spa System are registered trademarks of Sussman-Automatic Corporation. PUR 100420 3.19